



---

# UNIFIED COVID-19 ALGORITHMS

## Section 3 GUIDELINES FOR PPE USE BY HEALTHCARE WORKERS

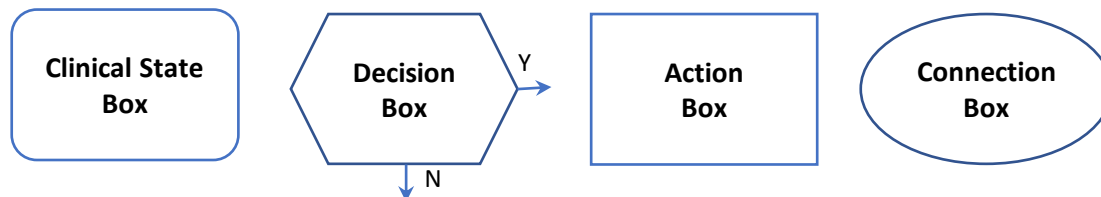
---

# TABLE OF CONTENTS

Introduction to Algorithm Interpretation	page 1
PPE Use in Hospital Facilities (FIGURE 3A)	page 2
PPE Use in Outpatient Facilities (FIGURE 3B)	page 3
PPE Use in the Community (FIGURE 3C)	page 4
PPE For Rapid Response Teams (FIGURE 3D)	page 5
References	page 6

# INTRODUCTION

The clinical algorithm (flow chart) is a text format that is specially suited for representing a sequence of clinical decisions which are intended to improve and standardize decisions in delivery of medical care. For the purpose of clarity, a typical clinical algorithm is depicted with basic symbols that represent clinical steps in decision-making:



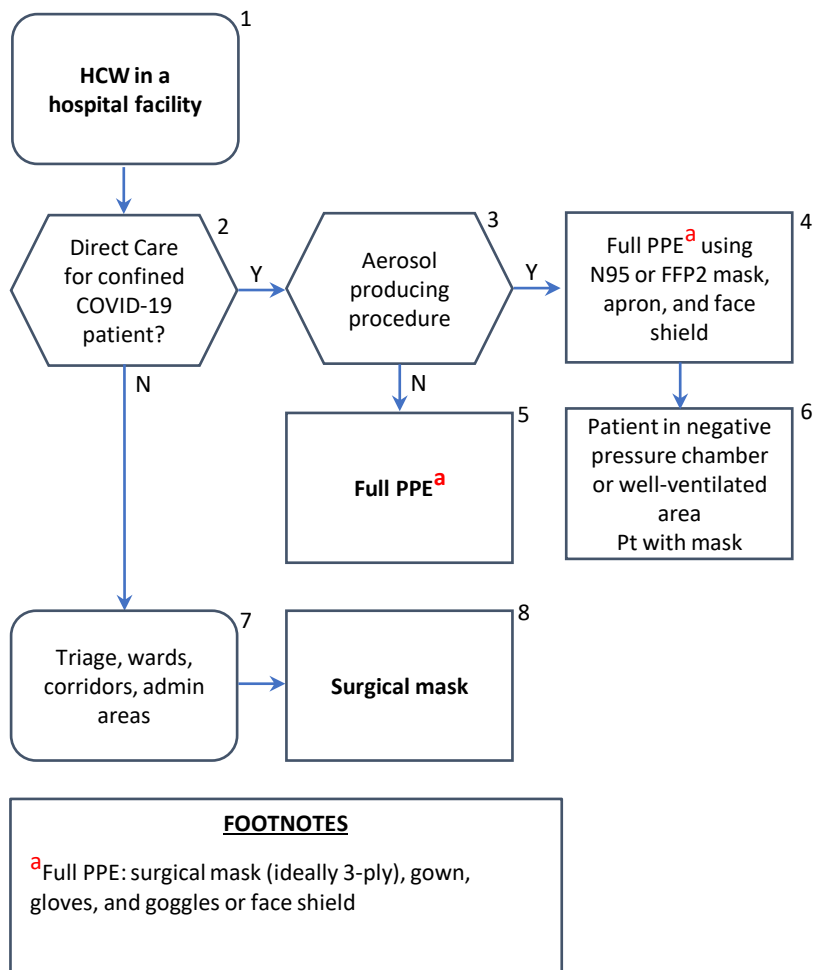
1. The rectangle with rounded edges depicts the current clinical state of an individual patient;
2. The hexagon is decision box which contains a question answerable by yes or no; one arrow going to the right signifies “yes”, and one arrow going downwards signifies “no”;
3. The rectangle with sharp edges depicts the action to be done; and
4. The oval depicts connection to another algorithm in a different page.

Note that the following algorithms are adapted from multiple guidelines as released by the World Health Organization, Department of Health, and other societies. This document was also reviewed by different experts with the end-goal of having a summarized and comprehensive compilation of guidelines that will aid in management of COVID-19 patients by healthcare workers from both the community and hospital levels.

Lastly, while these patient-centered algorithms intend to summarize and simplify recommendations, these may be subject to change as evidence emerges and guidelines are updated. Any recommendations on patient care are not absolute. Final decisions remain under the discretion of the healthcare provider.

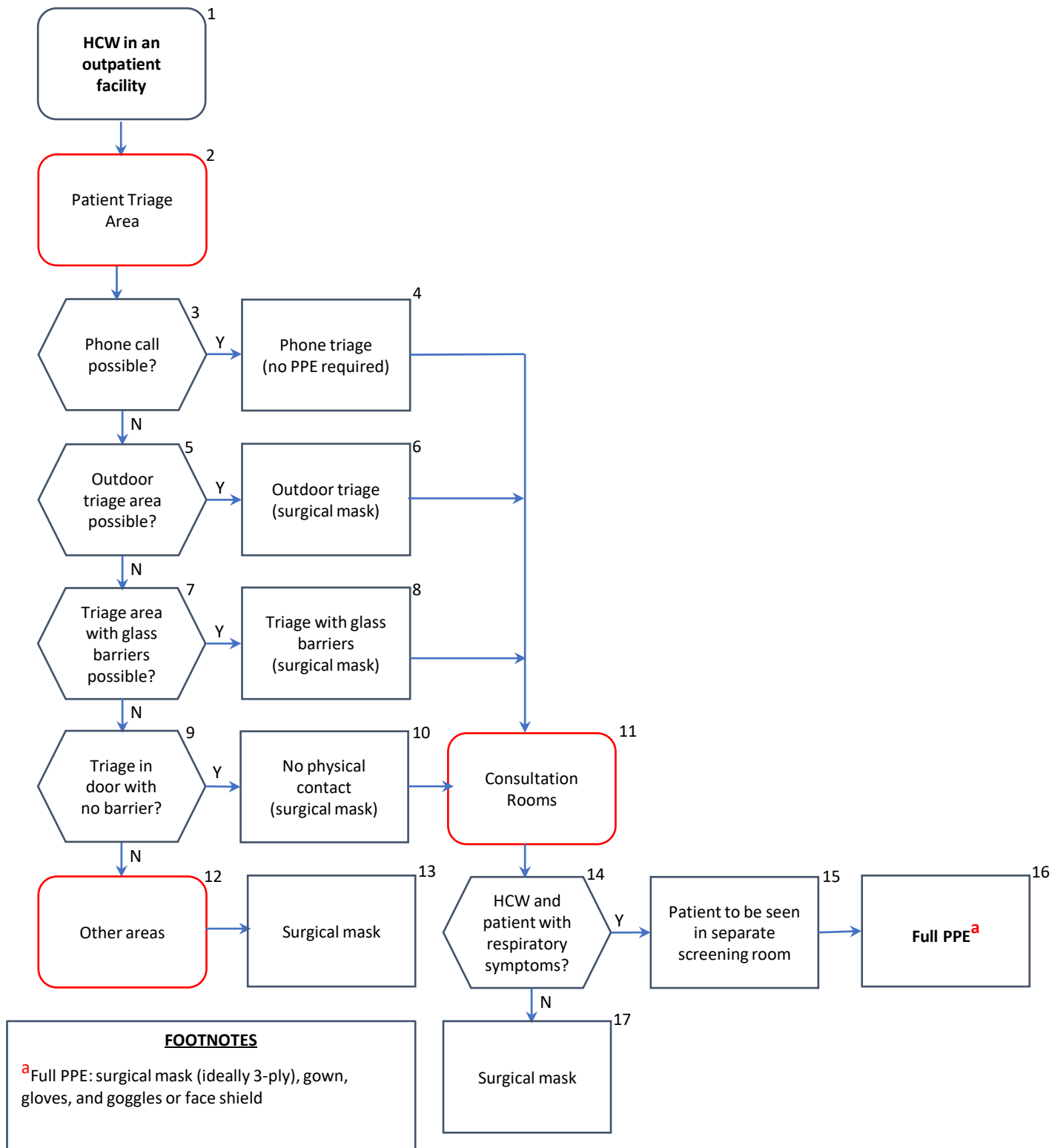
# FIGURE 3A. RECOMMENDED PPE FOR HEALTHCARE WORKERS IN HOSPITAL FACILITIES

Version 06 April 2020 (original)



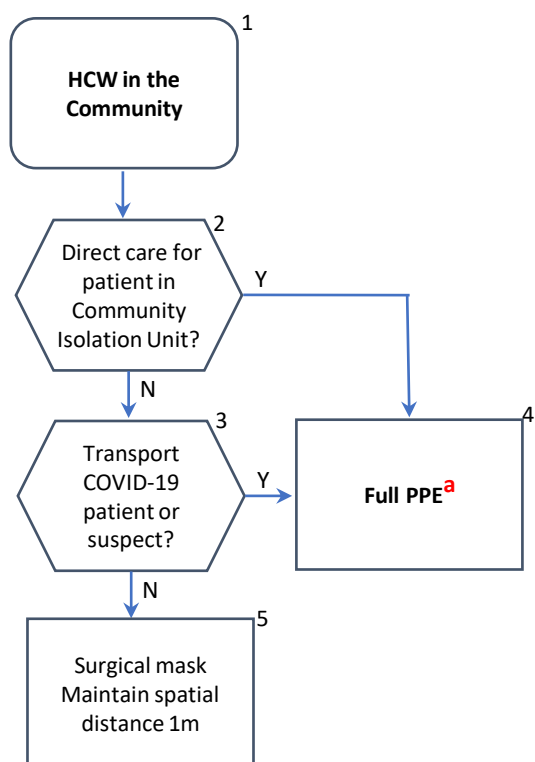
# FIGURE 3B. RECOMMENDED PPE FOR HEALTHCARE WORKERS IN OUTPATIENT FACILITIES IN AREAS WITH SUSTAINED COMMUNITY TRANSMISSION

Version 06 April 2020 (original)



# FIGURE 3C. RECOMMENDED PPE FOR HEALTHCARE WORKERS IN THE COMMUNITY

Version 06 April 2020 (original)

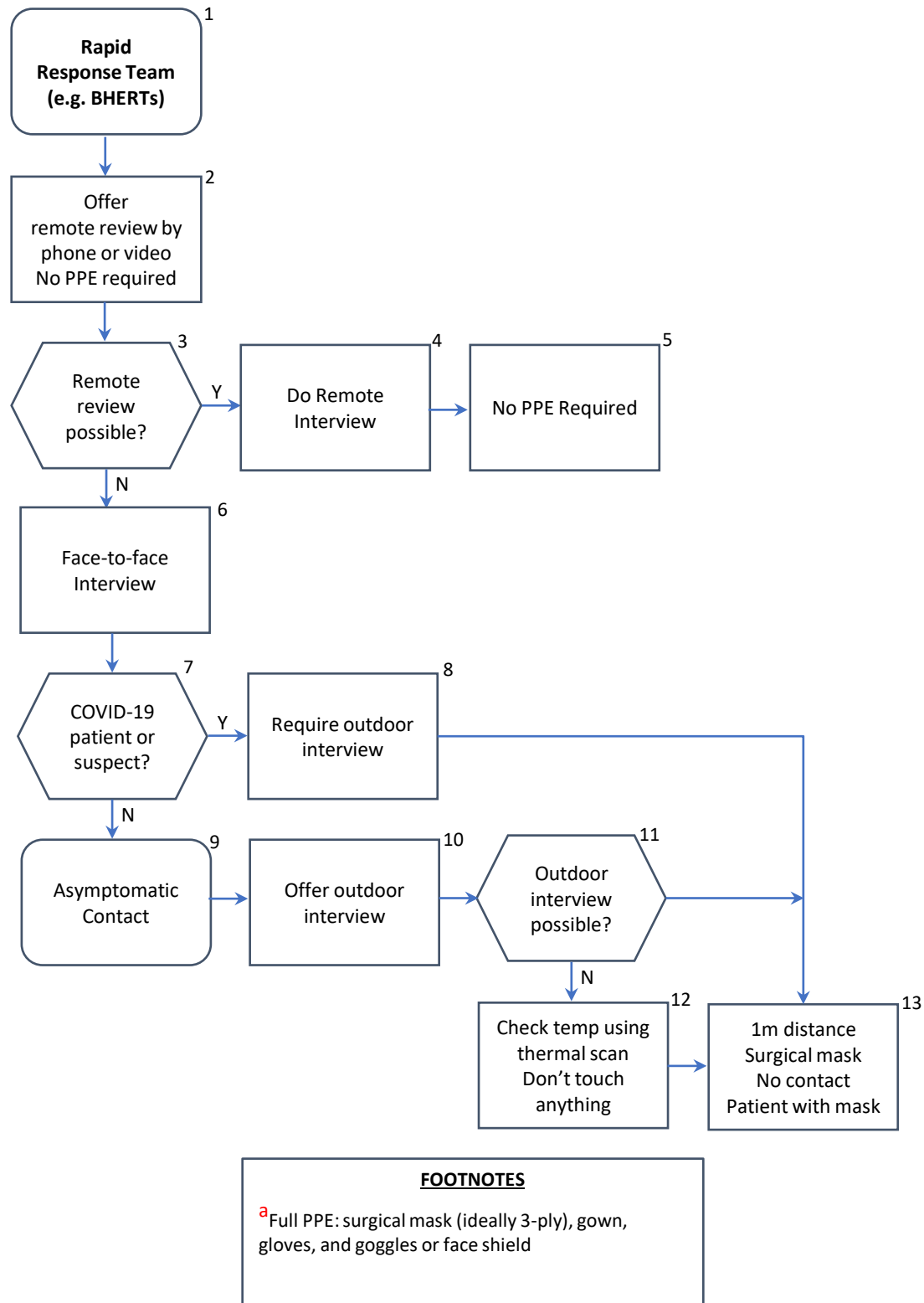


## FOOTNOTES

<sup>a</sup>Full PPE: surgical mask (ideally 3-ply), gown, gloves, and goggles or face shield

# FIGURE 3D. PPE USE FOR RAPID RESPONSE TEAMS ASSISTING IN PUBLIC HEALTH INVESTIGATIONS

Version 06 April 2020 (original)



# REFERENCES

De los Reyes, MA, et al. (2020). *Clinical Practice Guidelines for Sepsis and Septic Shock in the Philippines 2020 Full Manuscript*. Philippine Society for Microbiology and Infectious Disease

Department of Health. (2020). *Reiteration of the Guidelines on the Disposal and Shipment of the Remains of Confirmed Cases of 2019 Novel Coronavirus Acute Respiratory Disease (2019-nCoV ARD)*. Department Circular No 2020-0047

Philippine Obstetrical and Gynecological Society (Foundation) Inc., et al. (2020). *Algorithm on Management of Pregnant PUI/Confirmed COVID-19 Patient*

Philippine Society for Microbiology and Infectious Disease. (2020). *Interim Guidelines on the Clinical Management of Adult Patients with Suspected or Confirmed COVID-19 Infection 2.0*

Philippine Society of Public Health Physicians. (2020). *Recommendation on Community-Based Management of COVID-19 (v3)*

World Health Organization. (2020). *Rational use of personal protective equipment (PPE) for coronavirus disease (COVID-19)*